

INAUGURAL NORTHWELL LIVER DISEASE AND TRANSPLANT SYMPOSIUM

Live Interprofessional Continuing Education (IPCE) conference offered virtually via Zoom or in person.

Friday, May 24, 2024
7:45am – 5:20pm (EDT)

Zucker School of Medicine
500 Hofstra Boulevard
Hempstead, NY 11549



Register here or
scan the QR code

This activity was planned by and for the health care team, and learners will receive 8.0 Interprofessional Continuing Education (IPCE) credits for learning and change.



IPCE CREDIT™

Course directors

Nabil Dagher, MD
James S. Park, MD, FACP, FAASLD
Sanjaya Satapathy, MD, MS(Epi), FACP,
AGAF, FASGE, FAASLD

Keynote speaker

Amit Mathur, MD, MS, FACS



DONALD AND BARBARA
ZUCKER SCHOOL of MEDICINE
AT HOFSTRA/NORTHWELL

INAUGURAL NORTHWELL LIVER DISEASE AND TRANSPLANT SYMPOSIUM

Friday, May 24, 2024 | 7:45am - 5:20pm (EDT) | Live IPCE conference; also offered via Zoom
Zucker School of Medicine | 500 Hofstra Boulevard | Hempstead, NY 11549

Program agenda

7am Breakfast/Registration

7:45am Welcome/Introduction
Nabil Dagher, MD

Session I Hepatology I

Section leader: James Park, MD

Moderators: Christian Kuntzen, MD; Nishal Ravindran, MD

8am Breaking Boundaries: A Paradigm Shift in MASLD Diagnosis and Management Strategies
Jennifer Onwochei, MD, MPH

8:20am Charting Progress: EASL and AASLD Insights on Hepatitis B&C
Nazia Qazi, MD

8:40am Beyond Bile: A Deep Dive into PBC & PSC Diagnosis and Therapeutics
Hillel Tobias, MD, PhD

9am Cirrhosis Prevention 360: Bridging the Gap from Screening to Management Strategies
Alvin Htut, MD

9:20am Panel discussion - Q&A

9:40am Break/Exhibit Hall

Session II Hepatology II

Section leader: Sanjaya Satapathy, MD

Moderators: Henry Bodenheimer Jr., MD; Jennifer Onwochei, MD

10am Role of Early Liver Transplantation in Alcohol Associated Hepatitis
Nitzan Roth, MD, PhD

10:20am Behavioral Health Challenges in Liver Transplantation
Nishi Joshi, MD

10:40am Hepatologist's Perspectives in Portal Hypertension Management
Harmit Kalia, DO

11am Prevention and Management of Liver Frailty/Sarcopenia before Liver Transplantation
Hatef Massoumi, MD

11:20am Panel discussion - Q&A

11:40am Normothermic Machine Perfusion for Liver Transplantation
Special transplant keynote presentation
Amit Mathur, MD

12:20pm Q&A

12:30pm Lunch/Exhibit Hall

INAUGURAL NORTHWELL LIVER DISEASE AND TRANSPLANT SYMPOSIUM

Friday, May 24, 2024 | 7:45am - 5:20pm (EDT) | Live IPCE conference; also offered via Zoom
Zucker School of Medicine | 500 Hofstra Boulevard | Hempstead, NY 11549

Session III Interventional Radiology, Liver Transplantation & Hepatobiliary Surgery

Section leader: Nabil Dagher, MD

Moderators: Aaron Winnick, MD; Sandeep Anantha, MD

- 1:20pm** **Advanced Interventional Radiology Techniques in Managing Portal Hypertension**
Igor Lobko, MD
- 1:40pm** **Managing Opportunistic Infections in Early Stages of Liver Transplantation**
Esther Benamu, MD
- 2pm** **Hope or Hype: Liver Transplant for the Treatment of Metastatic Colorectal Cancer**
Lawrence Lau, MD
- 2:20pm** **Integrated Approach to Simultaneous Liver and Kidney Transplants: Current Guidelines and Strategic Insights**
Ahmed Fahmy, MD, FACS
- 2:40pm** **Complex case presentation and panel discussion**
Presenter: Mohammed Sharshar, MD
Panelists: Svetlana Inoyatova, PA-C; Nicholas Jandovitz, PharmD; Asma Arroon, LMSW
- 3:10pm** **Break/Exhibit Hall**

Session IV Multidisciplinary Approach to Liver Cancer

Section leader: Lawrence Lau, MD

Moderators: Sepideh Gholami, MD, MAS, FACS, FSSO; Cindy Law, MD; Hai Huang, MD, MMedSci

- 3:30pm** **From Bench to Bedside: Biomarker Breakthroughs in Early HCC Detection**
Lopa Mishra, MD
- 3:50pm** **Shifting Paradigms: Neo-Adjuvant Treatment in the Landscape of HCC**
Ana Levy, DO
- 4:10pm** **Precision Strikes: Exploring Liver-Directed Therapies in HCC**
Jonathan Weinstein, MD
- 4:30pm** **HCC: Liver Resection Vs. Transplantation Strategies**
Elliott Grodstein, MD, FACS
- 4:50pm** **Complex case presentation and panel discussion**
Presenter: Timea Csak, MD, PhD
Panelists: Johanna Medina, FNP-BC; Ngan Nguyen, PharmD, Alexandra Sanchez, LCSW
- 5:20pm** **Closing remarks and adjourn**
Sanjaya Satapathy, MD; James Park, MD; Nabil Dagher, MD



**Register here or
scan the QR code**

INAUGURAL NORTHWELL LIVER DISEASE AND TRANSPLANT SYMPOSIUM

Friday, May 24, 2024 | 7:45am - 5:20pm (EDT) | Live IPCE conference; also offered via Zoom
Zucker School of Medicine | 500 Hofstra Boulevard | Hempstead, NY 11549

Statement of need: Chronic liver disease (CLD) poses a significant global health burden, with hepatitis C, liver cancer, and non-alcoholic liver disease emerging as major contributors. Despite advances in research and therapeutic options, there exist substantial practice gaps among physicians and health care team members involved in the management of CLD. This knowledge deficit hinders optimal patient care and necessitates focused efforts to bridge these gaps. To address these practice gaps, this conference will focus on enhancing the knowledge and skills of health care professionals in the diagnosis, treatment, and comprehensive management of CLD, with a specific emphasis on hepatitis C, liver cancer, and non-alcoholic liver disease. Through targeted educational sessions and case-based discussions, the conference aims to empower health care teams to deliver evidence-based, patient-centered care, ultimately improving outcomes for individuals affected by chronic liver diseases.

Program objectives: All Northwell Health CME activities are intended to improve patient care, safety and outcomes. At the conclusion of this conference, participants should be able to:

- **Review** and critically analyze cases to improve quality and safety of patient care in management of CLD.
- **Manage** patients diagnosed with hepatitis C, incorporating stage grouping, evidence-based evaluation management guidelines and clinical trial data.

Target audience: This activity was planned by and for physicians, nurses, physician assistants and pharmacists. All other members of the health care team who are interested in liver disease and liver transplants are welcome to attend.

Joint accreditation statement: In support of improving patient care, Northwell Health is jointly accredited by the Accreditation Council for Continuing Medical Education (ACCME), the Accreditation Council for Pharmacy Education (ACPE), and the American Nurses Credentialing Center (ANCC), to provide continuing education for the health care team.



JOINTLY ACCREDITED PROVIDER™
INTERPROFESSIONAL CONTINUING EDUCATION

Credit designation statements

Physicians: Northwell Health designates this live activity for a maximum of 8.0 AMA PRA Category 1 Credits™. Physicians should claim only credit commensurate with the extent of their participation in the activity.

Nurses: Northwell Health designates this activity for 8.0 ANCC contact hours.

Pharmacists: Northwell Health designates this activity for a maximum of 8.0 ACPE credit hours.

Physician assistants: Northwell Health has been authorized by the American Academy of PAs (AAPA) to award AAPA Category 1 CME credit for activities planned in accordance with AAPA CME criteria. This activity is designated for 8.0 AAPA Category 1 CME credits. PAs should only claim credit commensurate with the extent of their participation.

Social Workers: Lenox Hill Hospital, Northwell Health is recognized by the New York State Education Department's (NYSED) State Board for Social Work as an approved provider for continuing education for Licensed Social Workers, #0406, and designates this activity for 8.0 contact hours.

ABIM MOC statement: Successful completion of this CME activity, which includes participation in the evaluation component (self-assessment), enables the participant to earn 8.0 MOC medical knowledge points in the American Board of Internal Medicine's (ABIM) Maintenance of Certification (MOC) program. It is the CME activity provider's responsibility to submit participant completion information to ACCME for the purpose of granting ABIM MOC credit.



Verification of attendance: This will be provided to all professionals.

Location: Donald and Barbara Zucker School of Medicine at Hofstra/Northwell
500 Hofstra Boulevard
Hempstead, NY 11549
and virtually via Zoom

Course offering and registration fees:

In person

- \$75** Non-Northwell MDs, DOs and pharmacists
- \$25** Non-Northwell RNs, NPs, PAs and social workers
- \$0** Northwell MDs, DOs, pharmacists, RNs, NPs, PAs and social workers
- \$25** Other
- \$0** Residents, fellows and medical students with ID

Virtual

- \$75** Non-Northwell MDs, DOs and pharmacists
- \$50** Northwell MDs, DOs and pharmacists
- \$25** All RNs, NPs, PAs and social workers
- \$25** Other
- \$0** Residents, fellows and medical students with ID

Registration fee for in-person includes:

Breakfast, lunch, course materials, CME/Verification of attendance certificate and parking.

INAUGURAL NORTHWELL LIVER DISEASE AND TRANSPLANT SYMPOSIUM

Friday, May 24, 2024 | 7:45am - 5:20pm (EDT) | Live IPCE conference; also offered via Zoom
Zucker School of Medicine | 500 Hofstra Boulevard | Hempstead, NY 11549

Cancellation policy: To receive a refund, all cancellations must be confirmed via email to Maureen King, CME project manager (mking9@northwell.edu), Office of Continuing Medical Education, by May 20, 2024. An administrative fee of \$10 will be kept for all cancellations. No refunds will be made after this date or for “no-shows.”

Disclosure policy: Northwell Health adheres to the ACCME’s Standards for Integrity and Independence in Accredited Continuing Education. Any individuals in a position to control the content of a CME-CE activity, including faculty, planners, reviewers or others are required to disclose all financial relationships with ineligible companies. All relevant financial relationships have been mitigated prior to the commencement of the activity.

Americans with Disabilities Act (ADA): This conference is in compliance with provisions of the ADA and is accessible for individuals with special needs. If you would like to attend this conference and require any special accommodations, please contact the Office of CME at (516) 730-2263.



**Register here or
scan the QR code**

Keynote speaker



Amit Mathur, MD, MS, FACS
Professor of Surgery
Division of Transplant Surgery
Department of Surgery,
Mayo Clinic School of Medicine
Surgical Director,
Liver Transplantation,
Mayo Clinic

Course directors



Nabil Dagher, MD, FACS*
VP and Director, Northwell
Transplant Institute
Co-Director, Center for Liver Disease
and Transplantation
Surgical Director, Liver Transplant



**Sanjaya Satapathy, MD, MS(Epi),
FACP, AGAF, FASGE, FAASLD**
Medical Director of Liver Transplant,
Associate Chief, Division of
Hepatology
Northwell Center for Liver Diseases
and Transplantation
Department of Medicine
North Shore University Hospital/
Northwell Health
Program Director,
Transplant Hepatology Fellowship
Professor, Medicine
Zucker School of Medicine



James S. Park, MD, FACP, FAASLD
Chief, Division of Hepatology
Department of Medicine
North Shore University Hospital,
LIJ Medical Center and
Lenox Hill Hospital
Co-Director, Northwell Center for
Liver Disease and Transplantation,
Northwell Transplant Institute
Associate Professor, Medicine
Zucker School of Medicine

INAUGURAL NORTHWELL LIVER DISEASE AND TRANSPLANT SYMPOSIUM

Friday, May 24, 2024 | 7:45am - 5:20pm (EDT) | Live IPCE conference; also offered via Zoom
Zucker School of Medicine | 500 Hofstra Boulevard | Hempstead, NY 11549

Faculty



Sandeep Anantha, MD, FACS, FICS, MBA
Director, Surgical Oncology
LIJ Forest Hills
Associate Professor, Surgery
Zucker School of Medicine



Sepideh Gholami, MD, MAS, FACS, FSSO
Director, Liver Multi-Disciplinary
Clinic & Hepatic Artery Infusion
Pump Program
Director, Translational Research in
Surgical Oncology
Associate Professor, Surgery
Zucker School of Medicine



Asma Arroon, LMSW
Transplant Social Worker
Northwell Transplant Institute
Northwell Health



Elliott Grodstein, MD, FACS
Director, Transplant Surgery
Fellowship
Northwell Transplant Institute,
Northwell Cancer Institute
Associate Professor, Medicine
Zucker School of Medicine



Esther Benamu, MD
Director, Transplant Infectious
Disease
Northwell Health



Alvin Htut, MD
Department of Medicine
Division of Gastroenterology and
Hepatology
Northwell Health
Assistant Professor, Medicine
Zucker School of Medicine



Henry Bodenheimer Jr., MD
Clinical Professor, Medicine
Zucker School of Medicine



Hai Huang, MD, MMedSci
Associate Professor
Center for Immunology and
Inflammation
Elmezzi Graduate School of
Molecular Medicine
Feinstein Institutes for Medical
Research



Timea Csak, MD, PhD
Physician, Department of Medicine
Division of Hepatology
Northwell Health Physician Partners
Assistant Professor, Medicine
Zucker School of Medicine



Svetlana Inoyatova, PA-C*
Supervisor, Advanced Clinical
Providers
Department of Transplant Surgery
North Shore University Hospital



Ahmed Fahmy, MD, FACS
Abdominal Organ Transplant Surgeon
Surgical Director, Pediatric Kidney
Transplantation
Northwell Health
Assistant Professor, Surgery
Zucker School of Medicine



Nicholas Jandovitz, PharmD*
Supervising Pharmacist
Solid Organ Transplant
Northwell Health Transplant
Institute
Assistant Professor, Surgery
Zucker School of Medicine

INAUGURAL NORTHWELL LIVER DISEASE AND TRANSPLANT SYMPOSIUM

Friday, May 24, 2024 | 7:45am - 5:20pm (EDT) | Live IPCE conference; also offered via Zoom
Zucker School of Medicine | 500 Hofstra Boulevard | Hempstead, NY 11549



Nishi Joshi, MD
Consultation-Liaison, Psychiatry
Northwell Transplant Institute
Northshore University Hospital
Assistant Professor, Psychiatry
Zucker School of Medicine



Igor Lobko, MD
Chief, Division of Vascular and
Interventional Radiology
Long Island Jewish Medical Center
Assistant Professor, Radiology
Zucker School of Medicine



Harmit S. Kalia, DO
Transplant Hepatologist
Director, Strategic Development
and Outreach
Associate Professor, Medicine
Zucker School of Medicine



Hatef Massoumi, MD
Clinical Director of Hepatology
Northwell Center for Liver Disease
and Transplantation
Lenox Hill Hospital
Associate Professor, Medicine
Zucker School of Medicine



Christian Kuntzen, MD
Sandra Atlas Bass Center for Liver
Diseases
Northwell Health
Assistant Professor, Medicine
Zucker School of Medicine



Johanna Medina, FNP-BC*
Supervisor, Advanced Clinical
Providers
Liver Transplant
Department of Transplant Surgery
North Shore University Hospital



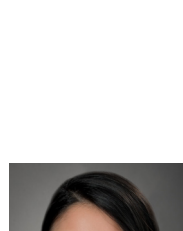
Lawrence Lau, MD
Assistant Professor, Surgery
Zucker School of Medicine



Lopa Mishra, MD
Professor, Medicine
Merinoff Endowed Chair, Co-Director,
The Institute for Bioelectronic
Medicine
Feinstein Institutes for Medical
Research and Cold Spring Harbor
Laboratory
Attending Physician, Divisions of
Gastroenterology and Hepatology
Northwell Health
Professor, Medicine
Zucker School of Medicine



Cindy S. Law, MD
Transplant Hepatology
Northwell Health
Assistant Professor, Medicine
Zucker School of Medicine



Ngan M. Nguyen PharmD, AAHIVP
Clinical Pharmacy Specialist,
Ambulatory Care, Hepatology
Department of Medicine
Center for Liver Diseases and
Transplantation
Northwell Health



Anna Levy, DO
Director, Hepatobiliary
Malignancies
Northwell Cancer Institute
Assistant Professor, Medicine
Zucker School of Medicine

INAUGURAL NORTHWELL LIVER DISEASE AND TRANSPLANT SYMPOSIUM

Friday, May 24, 2024 | 7:45am - 5:20pm (EDT) | Live IPCE conference; also offered via Zoom
Zucker School of Medicine | 500 Hofstra Boulevard | Hempstead, NY 11549



Jennifer Onwochei, MD, MPH
Division of Hepatology
Department of Medicine
Northwell Center for Liver Disease
and Transplantation
Assistant Professor, Medicine
Zucker School of Medicine



Hillel Tobias, MD, PhD
Director of Hepatology
Lenox Hill Hospital
Professor, Medicine
Zucker School of Medicine



Nazia Qazi, MD
Director of Hepatology
South Shore University Hospital
Division of Hepatology
Department of Medicine
Northwell Center for Liver Disease
and Transplantation
Associate Professor, Medicine
Zucker School of Medicine



Jonathan Weinstein, MD
Interventional Radiologist
Department of Radiology
Northwell Health
Assistant Professor, Radiology
Zucker School of Medicine



Nishal Ravindran, MD
Director, Hepatology
Northwell Health Physician Partners,
Staten Island
Assistant Professor, Medicine
Zucker School of Medicine



Edward White, MHA*
Project Manager
Department of Medicine
Northwell Health



Nitzan C. Roth, MD, PhD
Transplant Hepatology
Northwell Health
Associate Program Director,
Gastroenterology Fellowship at
North Shore University Hospital and
Long Island Jewish Medical Center
Assistant Professor, Medicine
Zucker School of Medicine



Aaron Winnick, MD, FACS
Transplant and Hepatobiliary
Surgery
Northwell Health
Assistant Professor, Surgery
Zucker School of Medicine



Alexandra A. Sanchez LCSW*
Licensed Clinical Social Work
Supervisor, Transplant Social Work
Northwell Transplant Institute

*Planners



Mohamed Sharshar, MD, PhD
Division of Transplantation
Department of Surgery
Northwell Health
Abdominal Organ Transplant
Surgical Fellow
Zucker School of Medicine

Conference coordinated by

Edward White, Project Manager
Medicine Service Line

Northwell Health's
Office of Continuing Medical Education
Michelle Dula-Harris, MHA, Sr. CME Program
Administrator
Maureen King, Project Manager
Nancy L. Petrone, Senior Manager, CME
Penny Stern, MD, Assistant Vice President,
Medical Education