



2023
NEUROSCIENCE
SYMPOSIUM

FRIDAY, SEPT. 15, 2023

8:50 a.m. to 3:50 p.m.

Registration, breakfast and exhibitors begin at 8 a.m.

Kentucky International Convention Center

221 S. Fourth St. • Louisville, Kentucky

Entry for the event is at the corner of Third and Jefferson streets.

Provided by



NORTON
NEUROSCIENCE INSTITUTE

Agenda

General sessions

- 8 a.m. Registration and breakfast; visit with exhibitors
- 8:50 a.m. Welcome and announcements
- 8:55 a.m. **Keynote address**
Reducing Disparities in Stroke Outcomes: Lessons Learned From the Florida Stroke Registry
Tatjana Rundek, M.D., Ph.D.
- 9:55 a.m. **Headache Update: Making the Call and Next Best Steps**
Brian M. Plato, D.O.
- 10:40 a.m. Break; visit with exhibitors
- 11:05 a.m. **Updates in Women and Multiple Sclerosis**
Roman M. Kassa, M.D., Ph.D.
- 11:50 a.m. **Epilepsy 101**
Ambica M. Tumkur, M.D.
- 12:35 p.m. Lunch; visit with exhibitors
- 1:35 p.m. **Updates in the Management of Common Movement Disorders**
Justin T. Phillips, M.D.
- 2:20 p.m. **Latest in Stroke Management**
L. Samuel Handshoe, D.O.
- 3:05 p.m. **Dementia Update: Evaluation and New Emerging Treatments**
Gregory E. Cooper, M.D., Ph.D.
- 3:50 p.m. Adjournment

Rehabilitation concurrent sessions

- 9:55 a.m. **COVID-19: How to Help Patients Emerge From Brain Fog**
Anne Blandford, SLPD, CCC-SLP
Brittany McAndrew, M.A., CCC-SLP, BCS-S, CBIS
- 10:40 a.m. Break; visit with exhibitors
- 11:05 a.m. **Under the Hood: Understanding the Mechanics of a Driving Assessment and Treatment**
Keegan Humphrey, MSOT, OTR/L, CDRS, CSRS, CLVT, CFPS, CDI, DPAM
- 11:50 a.m. **Multiple Sclerosis: Benefits of Multidisciplinary Rehabilitation Throughout the Disease Course**
Abigail L. Scinta, DPT, MSCS

Nursing concurrent sessions

- 1:35 p.m. **Topic 1: Seizure Treatment Update: Implications for Nursing**
Topic 2: Epilepsy Self-management and Patient-centered Nursing Care
Madona Plueger, MSN, ACNS-BC, CNRN, FAES

Target audience

This activity is targeted toward physicians, advanced practice providers, nurses and other clinicians in primary care, emergency medicine, neurology, neurosurgery, and physical medicine and rehabilitation.

Statement of educational need

This symposium will provide practitioners the latest updates on caring for patients with neurological disorders. Topics include updates on research, advancements in technology and available treatment options that can be vital to maximizing patient outcomes. Practitioners and clinicians should be aware of the latest neurological guidelines and advancements to effectively treat patients who present with neurological symptoms and disorders.

Objectives

1. Describe the latest clinical guidelines in the initial treatment of patients who present with neurological symptoms and/or disease.
2. Discuss treatment advances for patients with neurological disorders.
3. Identify primary and specialty treatment resources for specific neurological diseases.

Course director

Gregory E. Cooper, M.D., Ph.D.
Chief of Adult Neurology
Medical Director, Memory Center
Norton Neuroscience Institute

Guest faculty

Tatjana Rundek, M.D., Ph.D.
Professor of Neurology and Public Health Sciences
University of Miami Miller School of Medicine
Miami, Florida

Madona Plueger, MSN, ACNS-BC, CNRN, FAES
Neuroscience Clinical Nurse Specialist
Barrow Neurological Institute
Phoenix, Arizona

Local faculty

Anne Blandford, SLPD, CCC-SLP
Speech-language Pathologist
Norton Neuroscience Institute Cressman
Neurological Rehabilitation

Gregory E. Cooper, M.D., Ph.D.
Chief of Adult Neurology
Medical Director, Memory Center
Norton Neuroscience Institute

L. Samuel Handshoe, D.O.
Neurologist
Norton Neuroscience Institute

Keegan R. Humphrey, MSOT, OTR/L, CDRS, CSRS, CLVT, CFPS, CDI, DPAM
Occupational Therapist
Norton Neurosciences & Spine Rehabilitation Center

Roman M. Kassa, M.D., Ph.D.
Neurologist
Norton Neuroscience Institute

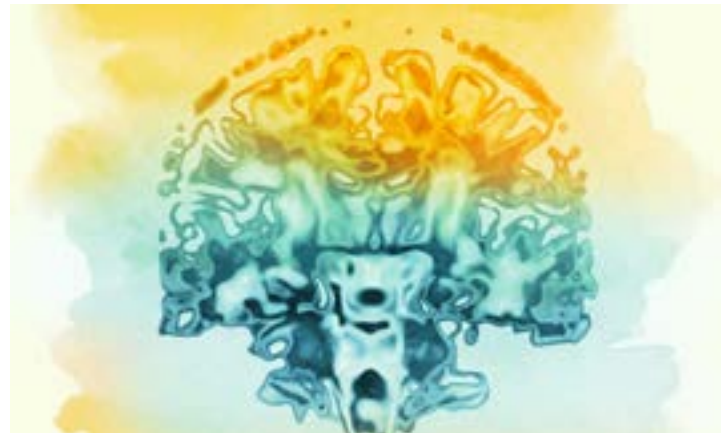
Brittany McAndrew, M.A., CCC-SLP, BCS, CBIS
Speech-language Pathologist
Norton Neuroscience Institute Cressman
Neurological Rehabilitation

Justin T. Phillips, M.D.
Neurologist
Norton Neuroscience Institute

Brian M. Plato, D.O.
Headache Medicine Specialist
Norton Neuroscience Institute

Abigail L. Scinta, DPT, MSCS
Physical Therapist
Norton Specialty Rehabilitation Center – St. Matthews

Ambica M. Tumkur, M.D.
Neurologist
Norton Neuroscience Institute



Continuing education credits

Physicians

AMA PRA Category 1 Credits™

Accreditation: Norton Healthcare is accredited by the Kentucky Medical Association to provide accredited continuing medical education for physicians.

Designation: Norton Healthcare designates this live activity for a maximum of 5.50 *AMA PRA Category 1 Credits™*. Physicians should claim only the credit commensurate with the extent of their participation in this activity.

American Board of Internal Medicine



Participants who successfully complete this CME activity, including the evaluation component, may earn up to 5.50 MOC points in the American Board of Internal Medicine's (ABIM) Maintenance of Certification (MOC) program. Participants will earn MOC points equivalent to the amount of CME credits claimed for the activity. The CME activity provider is responsible for submitting participant completion information to the Accreditation Council for Continuing Medical Education for the purpose of granting ABIM MOC credits.

For questions related to continuing medical education, contact the Norton Healthcare Center for Continuing Medical, Provider & Nursing Education at **(502) 446-5955** or **cme@nortonhealthcare.org**.

Nurses

American Nurses Credentialing Center

Norton Healthcare Institute for Education & Development is approved with distinction as a provider of nursing continuing professional development by the South Carolina Nurses Association, an accredited approver by the American Nurses Credentialing Center's Commission on Accreditation. This continuing professional development activity has been approved for 5.5 contact hours. In order for nursing participants to obtain credits, they must claim attendance by attesting to the number of hours in attendance.

For more information related to nursing credits, contact Sally Sturgeon, DNP, R.N., SANE-A, AFN-BC, at **(502) 446-5889** or **sally.sturgeon@nortonhealthcare.org**.

Rehabilitation providers and physical therapists

Kentucky Board of Physical Therapy

This program has been approved by APTA Kentucky, a Chapter of the American Physical Therapy Association, for 5.5 Category 1 contact hour(s).

For more information related to KPTA credits, contact Melanie Hoehn, P.T., MHA, at **(502) 446-8535** or **melanie.hoehn@nortonhealthcare.org**.

Other attendees

Confirmed attendance

Confirmed attendance hours will be recorded for all other attendees. Hours of confirmed attendance will be equivalent to the number of hours of one's attested attendance.

For additional information related to confirmed attendance, contact the Norton Healthcare Center for Medical, Provider & Nursing Education at **(502) 466-5955** or **cme@nortonhealthcare.org**.

Planning committee

Megan Anderkin (Norton Neuroscience Institute Resource Centers)

Karen Busse, M.S., CCMEC (Norton Healthcare Center for Medical, Provider & Nursing Education)

McKenna Byrley, B.A., CCMEC (Norton Healthcare Center for Medical, Provider & Nursing Education)

Yvette F. Cabrera-Rojas (Norton Neuroscience Institute Resource Centers)

Gregory E. Cooper, M.D., Ph.D. (Norton Neuroscience Institute)

Heather Osborne (Norton Neuroscience Institute Resource Centers)

Melissa Redick, MBA (Norton Medical Group)

Sally Sturgeon, DNP, R.N., SANE-A, AFN-BC (Norton Healthcare Center for Medical, Provider & Nursing Education)

Jessica Sumner, DNP, APRN, ACNS-BC, CEN (Norton Neuroscience Institute)

David A. Sun, M.D., Ph.D. (Norton Neuroscience Institute)

Rehabilitation planning committee

Susan Clark, MHA, M.S., CCC-SLP (Norton Specialty Rehabilitation Center – St. Matthews)

Robin Dixon, P.T. (Norton Neurosciences & Spine Rehabilitation Center)

Melanie Hoehn, P.T., MHA (Cressman Neurological Rehabilitation)

Faculty and planner disclosure

Norton Healthcare adheres to the Kentucky Medical Association and American Nurses Credentialing Center's guidelines and standards regarding the influence of commercial support for accredited continuing education as well as the Standards for Commercial Support regarding ineligible company support. During the planning process, all individuals in a position to control the content of the educational activity (course director, planners and presenters) are required to disclose all financial relationships with ineligible companies and the nature of that relationship. This information is assessed by the Norton Healthcare Center for Medical, Provider & Nursing Education to ensure an acceptable mitigation of any identified conflicts prior to the activity.

All attendees will be asked to evaluate the speakers' content for bias and balance.

Registration

Fees

Attendees: \$75

Students and retired clinicians: \$50

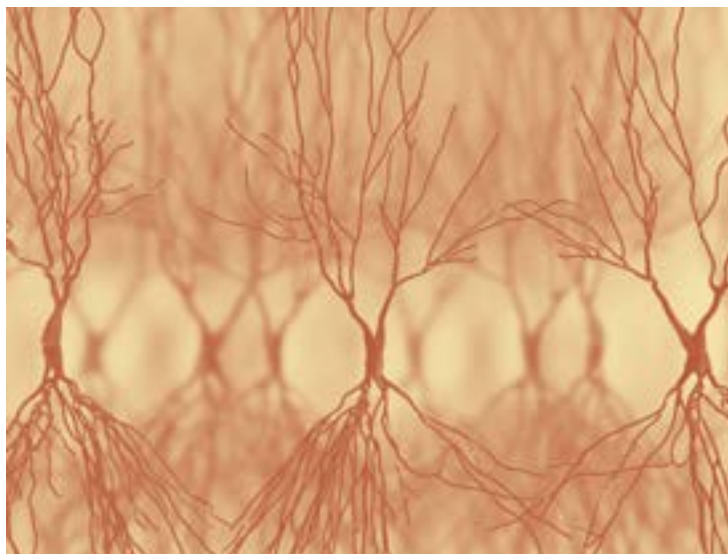
The registration fee includes breakfast, lunch, refreshments and program access.

Deadline: Friday, Sept. 8, 2023

To register:

1. Visit this [link](#) or NortonCME.com and locate the activity by date.

2. Scan the QR code:



Cancellation policy

As a courtesy to our planners, if you must cancel registration, kindly do so by Friday, Sept. 1, 2023, as planning for on-site catering and setup are final at this time. To cancel, email cme@nortonhealthcare.org.

Course materials

Presentation slides and symposium information will be available at NortonCME.com. Select the "Conference Details/Presentation" option and then this activity.

Acknowledgments

Norton Healthcare gratefully acknowledges participation from the following exhibitors at the time of this brochure printing.

AbbVie Inc.
Alexion Pharmaceuticals
Alzheimer's Association
Amneal Pharmaceuticals LLC
Amylyx Pharmaceuticals
AstraZeneca
Biogen
Boston Scientific Corp.
Bristol Myers Squibb
EMD Serono
Jazz Pharmaceuticals Inc.
Kyowa Kirin Co. Ltd.
Lilly USA LLC
Medtronic
Neurelis Inc.
Neurotech LLC
Norton Neuroscience Institute
Novartis
PAM Health
Pallitrus Health
Parkinson's Foundation
Pfizer Inc.
Schad Law
Sumitomo Pharma Co. Ltd.
Supernus Pharmaceuticals Inc.
Teva Pharmaceutical Industries Ltd.
TG Therapeutics Inc.
Virage Simulation Inc.



NORTON
NEUROSCIENCE
INSTITUTE