

# REGISTER NOW

15<sup>th</sup> Annual

# Insights into AUTISM

**Spanning the Spectrum: Advances in Autism  
Diagnosis, Practice, and Social Awareness**

**Friday, February 7, 2025  
8 a.m. - 4 p.m.**

**Old Dominion University's  
Eastern Virginia Medical School Campus,  
Lester Hall, Norfolk, Virginia**

Presented by



MACON & JOAN BROCK VIRGINIA HEALTH SCIENCES  
**Eastern Virginia Medical School**  
AT OLD DOMINION UNIVERSITY

 **Children's Hospital  
of The King's Daughters**

In collaboration with



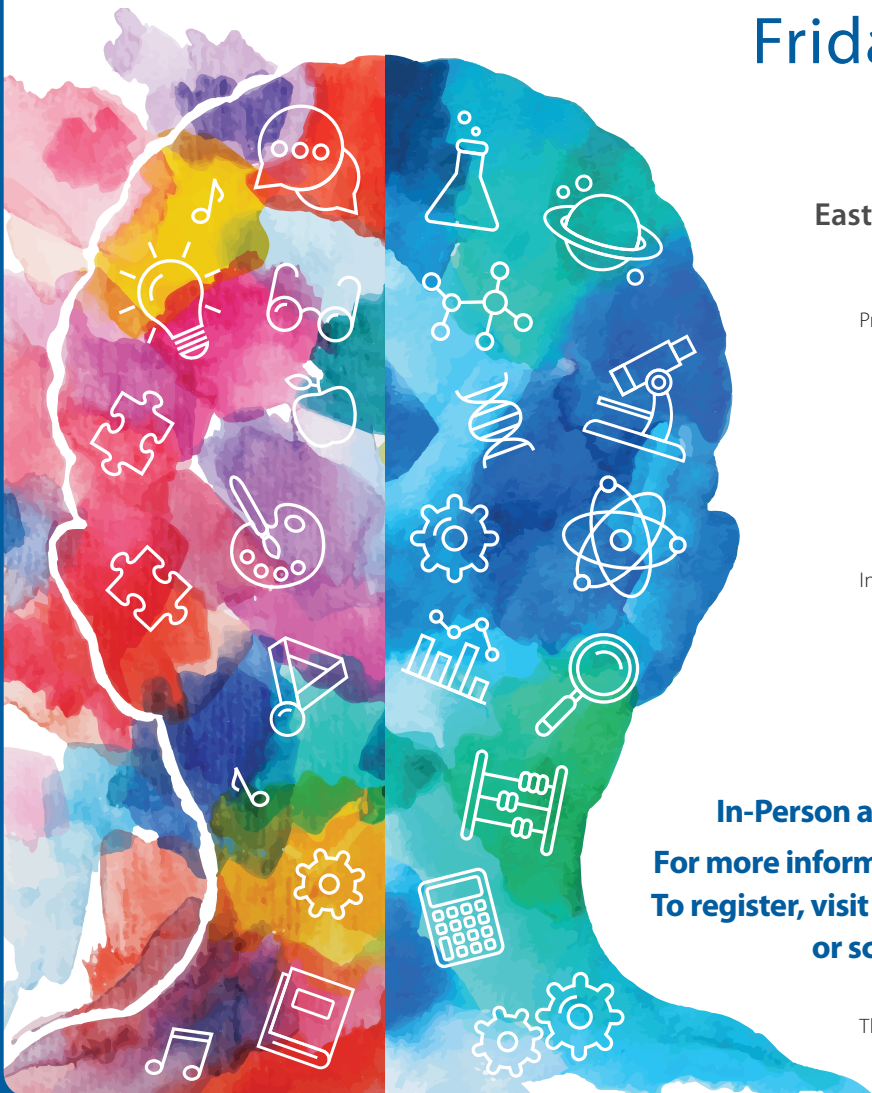
**In-Person and Virtual Attendance.**

**For more information, visit [CHKD.org/CME](https://CHKD.org/CME).**

**To register, visit [EVMS.edu/CMERegistration](https://EVMS.edu/CMERegistration)  
or scan the QR code.**



This activity has been approved for AMA PRA Category 1 Credit™.



# 15<sup>th</sup> Annual Insights into **AUTISM**

## ► Conference Overview

This activity aims to provide attendees with resources for advocacy and a better understanding of neurodiversity from many perspectives including culturally competent practices and equitable care for neurodiverse individuals, addressing the unique needs of linguistically and culturally minorized populations. Attendees will also learn the latest in autism identification practices, behavioral strategies, psychopharmacology, and digital health innovations including artificial intelligence.

## ► Target Audience

This conference is designed for pediatricians, neurologists, psychologist, psychiatrists, nurses, occupational therapists, speech therapists, art therapists, special education teachers, social workers, other interested allied health professionals, and anyone who wishes to improve care to patients and families diagnosed with an Autism Spectrum Disorder(ASD).

## ► Continuing Medical Education Credit

### **ACCREDITATION STATEMENT**

This activity has been planned and implemented in accordance with the accreditation requirements and policies of the Accreditation Council for Continuing Medical Education (ACCME) through the joint providership of Macon & Joan Brock Virginia Health Sciences at Old Dominion University and Children's Hospital of The King's Daughters. Macon & Joan Brock Virginia Health Sciences at Old Dominion University is accredited by the ACCME to provide continuing medical education for physicians.

### **CREDIT DESIGNATION**

Macon & Joan Brock Virginia Health Sciences at Old Dominion University designates this live activity for a maximum of 6.00 *AMA PRA Category 1 Credits™*. Physicians should claim only the credit commensurate with the extent of their participation in the activity.

## ► Continuing Nursing Credit

Children's Hospital of The King's Daughters is approved as a provider of nursing continuing professional development by the Virginia Nurses Association, an accredited approver by the American Nurses Credentialing Center's Commission on Accreditation.

Children's Hospital of The King's Daughters designates this live activity for a maximum of 6 contact hours.

## ► Psychology Credit

4.75 hours of continuing education credit will be awarded for psychologists. The Macon & Joan Brock Virginia Health Sciences at Old Dominion University is approved by the American Psychological Association to sponsor continuing education for psychologists. The Macon & Joan Brock Virginia Health Sciences at Old Dominion University maintains responsibility for this program and its content. For questions regarding CE for psychologists, please contact Dr. Flaherty, [Jennifer.Flaherty@CHKD.org](mailto:Jennifer.Flaherty@CHKD.org).

## ► Cancellation Policy

Cancellations must be received by 5 p.m. EST, January 31, 2025, to receive a refund; however, an administrative fee of \$10 will be retained on all cancellations. Refunds will not be given for cancellations received after this date or for no shows. Cancellations must be submitted in writing and may be emailed to [CME@ODU.edu](mailto:CME@ODU.edu).

### **Registration Fees**

Physicians: \$185

Other Professionals: \$95

EVMS/ODU Trainees/Students: Free

Other Trainees/Students: \$35

Parent/Caregiver of child(ren) with Autism - In-Person: \$15

Parent/Caregiver of child(ren) with Autism - Virtual: FREE

Persons with Autism - In-Person: \$10

Persons with Autism - Virtual: Free

# 15<sup>th</sup> Annual Insights into **AUTISM**

## Agenda

- 7:30 a.m. Sign-In/Light Breakfast
- 8:00 a.m. Welcome and Overview  
*John W. Harrington, MD and Janice Keener, PsyD*
- 8:10 a.m. **Equitable Autism Identification Practices for Culturally and Linguistically Minoritized Populations\***  
Recognize limitations and challenges with traditional autism assessment practices within culturally and linguistically minoritized populations. Identify and promote implementation of culturally and linguistically responsive autism identification strategies.  
*Bryn Harris, PhD, NCSP, LP*
- 9:00 a.m. **Psychopharmacology and Autism\***  
Define the medications used to treat psychiatric diagnoses in youth with autism. Explain which two medications have FDA approval for the treatment of irritability in autism.  
*Tamara Palka, MD*
- 9:45 a.m. Break
- 10:00 a.m. **Exploration of Avoidant/Restrictive Food Intake Disorder (ARFID) and Autism\***  
Differentiate between subtypes of ARFID and identify the most common presentation associated with autism. Utilize treatment strategies specific to ARFID in the autism population.  
*Roslyn Gerwin, DO*
- 10:50 a.m. **How Digital Health Is Transforming Early Screening for Autism\***  
Identify some of the limitations to current methods for autism screening and why accurate screening is important. Describe how digital health and artificial intelligence are being used to develop novel autism screening approaches.  
*Geraldine Dawson, PhD*
- 11:45 a.m. Lunch
- 12:45 p.m. **Generalizing Teaching and Behavioral Strategies from Clinic to Home for Autism\***  
Assess generalizability of behavioral recommendations for home use for parent success in implementation of behavioral recommendations in the home environment. Apply generalized behavioral recommendations for supporting autistic youth in the home environment post clinic discharge.  
*Christin McDonald-Fix, MD*
- 1:30 p.m. **Profound Autism: Clarifying the Diagnosis, Supports, and Services**  
Define profound autism. Recall what support and services are appropriate for patients with profound autism.  
*Judith Ursitti*
- 2:15 p.m. Break
- 2:30 p.m. **5 Lessons for the (Human) Spectrum**  
Explain diversities within the autism spectrum. Provide autistic patients with tools and techniques to navigate social situations effectively while staying authentic to themselves. Relate practical life skills, including self-advocacy, emotional regulation, and resilience to autistic patients.  
*Jennifer Cook*
- 3:00 p.m. **Panel Discussion: Love (and Friendship) On the Spectrum: Building the Fundamentals for Lifelong Connection**  
Analyze challenges those on the autism spectrum may face in dating. Recommend resources to those on the autism spectrum looking to date.  
Moderator: *Jennifer Cook*
- 3:50 p.m. Wrap-up  
*John W. Harrington, MD and Janice Keener, PsyD*
- 4:00 p.m. Adjournment

**For more information, visit [CHKD.org/CME](https://CHKD.org/CME).  
To register, visit [EVMS.edu/CMERegistration](https://EVMS.edu/CMERegistration).**

*\*Approved for Continuing Education for Psychology.*

# 15<sup>th</sup> Annual Insights into **AUTISM**

---

## Course Directors

### **John W. Harrington, MD**

Vice-President of Quality/Safety and Clinical Integration  
Co-Director of General Academic Pediatrics  
Vice-Chair of Primary Care  
Children's Hospital of The King's Daughters  
Professor of Pediatrics  
Eastern Virginia Medical School at ODU  
Norfolk, VA

### **Janice Keener, PsyD**

Assistant Professor of Clinical Pediatrics  
Eastern Virginia Medical School at ODU  
Director of Psychological and Assessment Services in  
Developmental Pediatrics  
Children's Hospital of The King's Daughters  
Norfolk, VA

## Guest Faculty

### **Jennifer Cook**

Neurodiversity Expert, Consultant, and Author  
Charlotte, NC

### **Geraldine Dawson, PhD**

William Cleland Distinguished Professor of Psychiatry and  
Behavioral Sciences  
Professor of Psychology and Neuroscience and Pediatrics  
Duke Center for Autism and Brain Development  
Duke University School of Medicine  
Durham, NC

### **Roslyn Gerwin, DO**

Director, Pediatric Consultation Psychiatry  
The Barbara Bush Children's Hospital at Maine Medical Center  
Assistant Clinical Professor  
Tufts University School of Medicine  
Portland, ME

### **Bryn Harris, PhD, NCSP, LP**

Professor  
School of Education and Human Development &  
Department of Pediatrics (Developmental Pediatrics)  
University of Colorado Denver  
Denver, CO

### **Christin McDonald-Fix, MD**

Licensed Psychologist and Licensed and Board-Certified  
Behavioral Analyst  
Clinical Director of Neurodevelopmental Services at  
Children's Hospital of the King's Daughters and Children's  
Specialty Group  
Assistant Professor of Pediatrics/Division of Child and  
Adolescent Psychiatry  
Eastern Virginia Medical School at ODU  
Norfolk, VA

### **Tamara Palka, MD**

Board Certified Child and Adolescent Psychiatrist  
Assistant Professor of Pediatrics  
Eastern Virginia Medical School at ODU  
Norfolk, VA

### **Judith Ursitti**

Co-Founder and President of Profound Autism Alliance  
Boston, MA

## Planning Committee

Sarah Chagnon MD  
Jennifer M. Flaherty, PhD  
Lisa Fore-Arcand, EdD  
John W. Harrington, MD  
Katelyn Hildreth, MSN, RN, CPN  
Janice Keener, PsyD  
Kelly A. McCoy, MMHPE  
Bailey Merrell  
Nicole Miller  
Tamara Palka, MD

**For more information, visit [CHKD.org/CME](https://CHKD.org/CME).  
To register, visit [EVMS.edu/CMEregistration](https://EVMS.edu/CMEregistration).**