

Winship Cancer Institute
of Emory University
presents

GENERAL INFORMATION

NEUROENDOCRINE TUMOR SYMPOSIUM



MARCH 9, 2019

Emory St. Joseph's Hospital Auditorium
5665 Peachtree Dunwoody Road NE
Atlanta, Georgia 30342



COURSE DESCRIPTION

Enjoy a half-day educational event covering a multidisciplinary approach to management of neuroendocrine tumor patients including sequencing of therapy, knowledge of PRRT, side effects and treatment implications.

TARGET AUDIENCE

Physicians, nurses, pharmacists and physician assistants.

LEARNING OBJECTIVES

Upon completion of this education activity, learners should be able to:

- Understand rationale for PRRT treatment and its complications;
- Recognize PRRT in second line treatment for GI NET;
- Understand and incorporate symptom management guidelines for NETs;
- Indications of liver directed therapy in the era of PRRT;
- Sequencing of systemic therapy.

CONTINUING EDUCATION CREDIT

The Emory University School of Medicine designates this live activity for a maximum of 4 *AMA PRA Category 1 Credits*[™]. Physicians should only claim credit commensurate with the extent of their participation in the activity.

Successful completion of this CME activity, which includes participation in the evaluation component, enables the participant to earn up to 4 MOC points in the American Board of Internal Medicine's (ABIM) Maintenance of Certification (MOC) program. It is the CME activity provider's responsibility to submit participant completion information to ACCE for the purpose of granting ABIM MOC credit.

The Emory University School of Medicine is accredited by the ACCME to provide continuing medical education for physicians.

SYMPOSIUM LOCATION

The conference will be held in the Emory St. Joseph's Hospital Auditorium, 5665 Peachtree Dunwoody Road NE, Atlanta, Georgia 30342.

REGISTRATION

The registration fee includes course material, continental breakfast and breaks. Minimum and maximum enrollments have been established. A refund of your registration fee will be made if written cancellation is received no later than **February 22, 2019**. The liability of Emory University is limited to the registration fee. Emory will not be responsible for any losses incurred by registrants, including but not limited to airfare cancellation or hotel deposits.

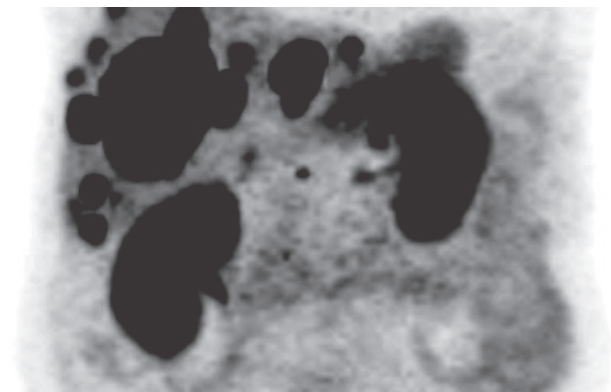
Registration fee:

\$75 Physician;

\$35 Nurses/Nurse Practitioners;

ADDITIONAL INFORMATION

Please contact Milini Mingo, 404-727-3612; milini.mingo@emory.edu or the Emory CME Office, 404-727-5695 with any questions.



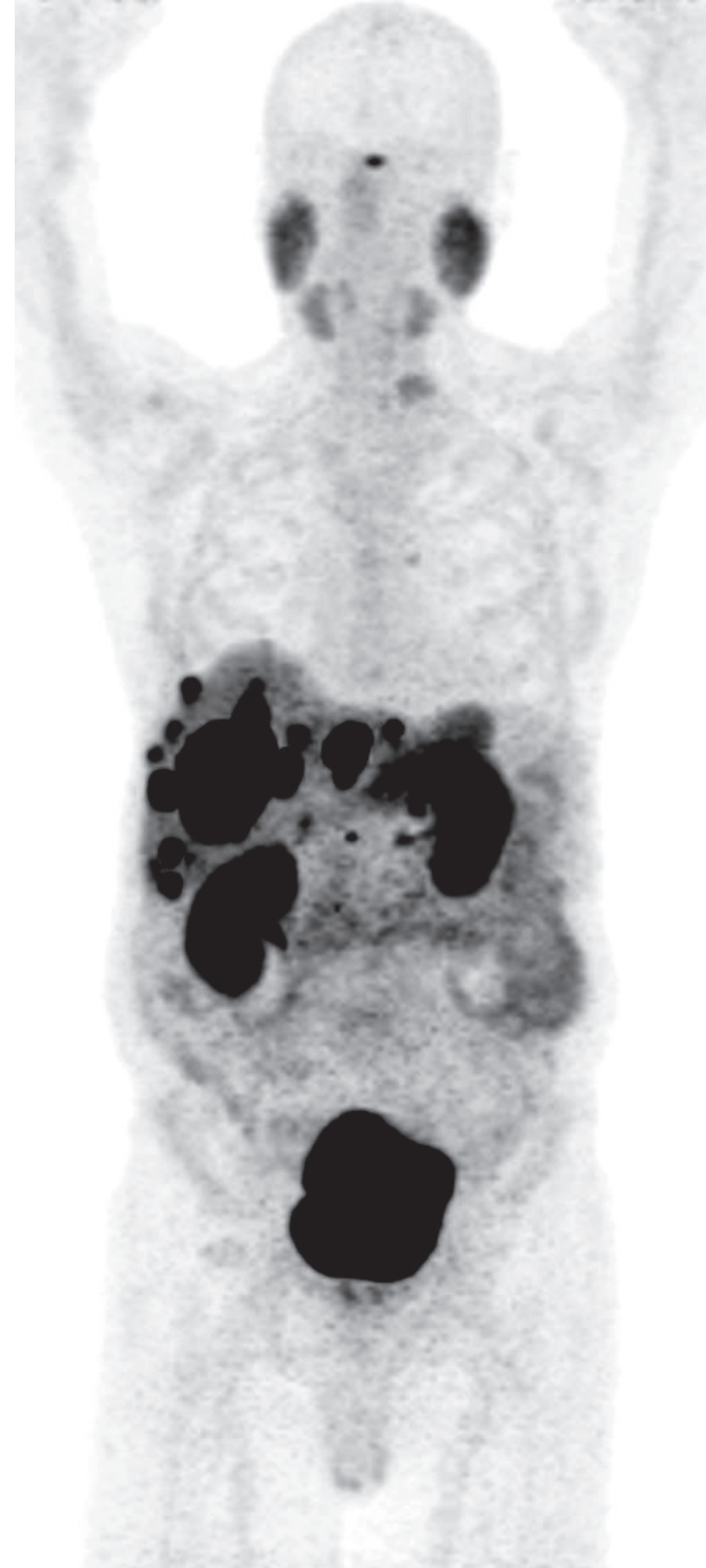
EMORY UNIVERSITY CONTINUING MEDICAL EDUCATION
100 Woodruff Circle NE, Suite 331
Atlanta, GA 30322



www.emory.edu/CME

MARCH 9, 2019

- 7:00-8:00 A **REGISTRATION AND CONTINENTAL BREAKFAST**
- 8:00-8:20 **FUNCTIONAL IMAGING OF NETs**
Valeria Moncayo, MD
- 8:20-8:40 **MANAGEMENT OF GASTRINOMAS**
Mihir Shah, MD
- 8:40-9:10 **NUTS & BOLTS OF PRRT AND POTENTIAL COMPLICATIONS**
Erin Grady, MD, FACNM
- 9:10-9:50 **INDICATIONS FOR SURGERY OF PRIMARY LESION AND DEBUKING**
Eric Liu, MD, FACS
- 9:50-10:05 **BREAK**
- 10:05-10:45 **DEBATE: PRRT VERSUS LIVER DIRECTED THERAPY AFTER PROGRESSION ON OCTREOTIDE ANALOGS**
Valeria Moncayo, MD vs. Ghassan El-Haddad, MD
- 10:45-11:15 **SYSTEMIC THERAPY IN THE ERA OF PRRT**
Philip Philip, MD, PhD
- 11:15-11:30 **BREAK**
- 11:30-12:00 P **SURGICAL MANAGEMENT OF LIVER METS: RESECTION, TRANSPLANT OR LIVER DIRECTED THERAPY**
Marty Sellers, MD, MPH
- 12:00-12:30 **SYMPTOM MANAGEMENT OF CARCINOID SYNDROME**
Walid Shaib, MD



COURSE CO-DIRECTORS

Walid Shaib, MD
Assistant Professor of Hematology and Medical Oncology
Department of Medicine
Division of Hematology and Oncology

Erin Grady, MD, FACNM
Associate Professor of Radiology and Imaging Sciences
Director of Nuclear Medicine Education
Department of Radiology and Imaging Sciences
Division of Nuclear Medicine and Molecular Imaging

INVITED FACULTY

Ghassan El-Haddad, MD
Section Head Radionuclide Therapy Program
Associate Member
Associate Professor, Department of Radiology
Moffitt Cancer Center and Research Institute
University of South Florida

Eric Liu, MD, FACS
General Surgeon, Neuroendocrine Specialist
Rocky Mountain Cancer Centers

Philip Philip, MD, PhD, FRCP, FABC
Professor of Oncology, Pharmacology and Medicine
Kathryn Cramer Endowed Chair in Cancer Research
Vice President of Medical Affairs
Department of Oncology, Karmanos Cancer Institute
Wayne State University School of Medicine
Detroit, Michigan

FACULTY

Valeria Moncayo, MD
Assistant Professor of Radiology and Imaging Sciences
Co-Director of Nuclear Cardiology
Department of Radiology and Imaging Sciences
Division of Nuclear Medicine & Molecular Imaging
Emory University School of Medicine

Marty Sellers, MD, MPH
Associate Professor of Surgery, Division of Transplantation
Department of Surgery
Emory University School of Medicine

Mihir Shah, MD
Assistant Professor, Division of Surgical Oncology
Department of Surgery
Emory University School of Medicine

NEUROENDOCRINE TUMOR SYMPOSIUM

**MARCH 9
2019
ATLANTA**

**Emory University
St. Joseph's Hospital Auditorium
5665 Peachtree Dunwoody Road NE
Atlanta, Georgia 30342**

ONLINE REGISTRATION RECOMMENDED:
www.emory.edu/CME

**OR - Register on this form if you are
faxing or mailing**

Name: _____

Specialty/Title: _____

Mailing Address: _____

City/State/Zip: _____

Phone: _____ Fax: _____

Email: _____

Special Needs: (dietary or otherwise): _____

REGISTRATION FEES

Physicians - \$75

Nurses/PAs/Residents - \$35

Make check(s) payable to:
Emory University School of Medicine

Detach and mail to the address below:
Continuing Medical Education
Emory University School of Medicine
100 Woodruff Circle NE, Suite 331
Atlanta, GA 30322

Main: (404) 727-5695 **Toll Free:** (888) 727-5695

Fax: (404) 727-5667

Email: milini.mingo@emory.edu